

ISSUE #1

BELLE VUE

DAY TRIP

Excursions for Group Bookings



Accessible



COACH TOURISM
COUNCIL
Promoting Travel and Tourism by Coach





For bookings call 0161 947 9477

INTRODUCTION TO OUR DAY TRIP EXCURSIONS

Welcome to Belle Vue's latest 'Day Trip Excursion Brochure for Groups.'

Year on year, our customers have expressed their appreciation for our ideas on creating memorable day trip excursions and once again we have pleasure in refreshing our old day trip excursion brochure and adding new excursions (and tweaking old ones) that make for a really memorable and enjoyable day out for you and your group.

If you digest the brochure and choose your favourite excursions you will find that you can experience a cracking day out that your group will thoroughly enjoy for little £ per person. Select the tours you are interested in then call our team and finalize your plans. If you are eating out on your day out, call the restaurant direct in advance and reserve your places.

If there is something you would like to add or take away on the excursion please do not hesitate to ask. Our excursions are not set in stone and they can be adapted to suit your requirements. Thus ensuring you get the maximum pleasure from your travel experience.

Belle Vue Manchester are a company who firmly believe that being a wheelchair owner should not prevent you from getting out and about and enjoying the fabulous times that your friends have on our coach excursions. For this reason our fleet of coaches are enhanced with fitted wheelchair lifts that customers who are wheelchair bound can enter the coach via the lift with comfort and ease. There is no trouble or inconvenience what so ever as each coach is driven by one of our charismatic fully experienced driving team who are full of personal care and attention. So you are in safe hands from the moment you leave home until your return.

We can offer a range of wheel chair accessible vehicles from mini-buses, yellow school buses, standard to luxury coaches, all of which can be configured to allow wheelchair passengers the same comfort and convenience as fully mobile passengers. We provide coaches for day trip excursions, weekend breaks and holidays, theatre trips, school and educational events, sight seeing tours and corporate travel.

Situated in Stockport in the North West of England we are ideally placed for easy access to the motorway network delivering tours to all areas of the UK and Europe.

All of our fleet of coaches are fully seat belted, are non-smoking, have restraints for any size of wheelchair and are chauffeur driven by a professionally trained driver who has passed a stringent recruitment procedure including a CRB Security Check. Driver training includes customer service, conflict avoidance, tachograph management, first aid and personal development. Our team are highly trained in providing outstanding service and enjoyment. You can be assured that every individual team member goes the extra mile, each and every day.

We have coaches available, which seating can be configured to suit your group, with appropriate number of seats and wheelchair clamps and restraints. We can accommodate any size of wheelchair, including electric models, and a wheelchair lift will be available.

For further details of any of our services please do not hesitate to contact our office any time. Thank you for considering Belle Vue Manchester as your travel choice. We look forward to being of service to you in the near future. Happy travelling!



From all the team at Belle Vue



TRAVEL WITH 'TEAM BELLE VUE.'

Thank you for considering Belle Vue as your transport provider. We are delighted you are considering using our travel services for your travel excursions. We run a fleet of coaches that contain some comfortable features such as reclining seats, radio/CD systems with PA Systems, air conditioning and toilets. All our fleet are highly maintained with vigorous safety checks under a vigorous Health & Safety Policy. The difference between us and our competitors is our teams desire to go the extra mile each and every day. You really are travelling on a FUN day trip excursion should you have the pleasure in travelling with our company.

Our team are hand picked for the role they play within the company. This might be an account manager who looks after your booking requirements from issuing prices (many prices are detailed in our brochure) to taking down the personal requirements of your group and the individual special needs of some of your group. All our drivers go through a vigorous interview and induction process, a CRB check and are fully trained within the job to CPC standard. We have some of the best quality individuals who will go the extra mile and ensure your group are safe and sound from leaving home until your return.

Contact our team to arrange your next outing!

ACCESSIBLE COACH HOLIDAYS FOR GROUPS.

Do you and your group have a desire to travel away for a weeks holiday? We arrange tours all over the UK and Europe for individual groups and we have many options for resorts and choices of hotels!

Our holidays include, accessible coach with wheel chair lift, an experienced tour driver, hotels with fine food on a dinner, bed and breakfast basis with entertainment every evening.

We include coach excursions out and about most days to see the local attractions.

Contact tour office for further details on our coach holiday tours.





For bookings call 0161 947 9477

DAY TRIPS AT A GLANCE



EXCURSIONS A – C

PAGE	EXCURSION	PRICE
06	Amber Valley & Crich Tramway Village	£475
06	Bakewell Market & Derbyshire Drive	£445
07	Blackpool or St Annes/ Cleveleys/Fleetwood	£445
07	Blackpool Illuminations	£445
08	Blackpool Party - The New President Hotel	£445
09	The Bourne Poacher Party afternoons for the young at heart	£445
09	Buxton & The Pavillion Gardens	£445
10	Cheshire Drive, Riverside Pub/Restaurant	£445
10	Cheshire Oaks Designer Outlet Village + Chester Zoo	£435
11	Cheshire/Shropshire Drive & Narrowboat Inn	£445
11	Chester, River Dee Cruise	£435
12	Clitheroe Market & Ribble Drive	£445

EXCURSIONS C – O

PAGE	EXCURSION	PRICE
12	Conway	£445
13	Eden Camp (World War 11 Nostalgia Trip)	£475
13	The Hanging Gate – Christmas party sing-along	£405
14	Heartbeat & Whitby	£475
14	Knowsley Safari Park	£425
15	Liverpool	£395
15	Llandudno	£445
16	Matlock Bath & Masson Mills Shopping Village	£450
16	Meadowhall Shopping Centre	£395
17	Market Days	from £425
18	The Millstones Restaurant – Yorkshire	£475
18	Morecambe Bay & Hart's Restaurant	£475
19	Ormskirk Market & Southport (Market Day Thursday)	£425



EXCURSIONS O – S

PAGE	EXCURSION	PRICE
20/21	Oswaldtwistle Mills Shopping Village	£425
22/23	Party Afternoons (Various) from	£425
19	Peak Shopping Village	£425
24	Racecourses from	£395
25	Rivington Hall Barn	£425
25	Settle – For a Great Day Out (Market Day Tuesday)	£450
26	Shrewsbury	£445
26	Smithills Coaching House	£395
27	Snowdonia Mini Tour	£495
27	Southport	£425
28	Southport – The Talbot Hotel Party Afternoon	£425
28	Staffordshire Roaches Drive	£445
29	St Annes – The Lindum Hotel	£445
29	Stapeley Water Gardens	£425

EXCURSIONS T – Y

PAGE	EXCURSION	PRICE
30	The Trentham Estate	£445
30	Ullswater & The Inn On The Lake	£495
31	Welcome Days Out from	£465
32	Welshpool Where Wales Begins	£445
32	Wensleydale A Grand Day Out	£495
33	Windermere	£495
33	Winking Man & Staffordshire Roaches	£445
34	Wirral	£435
34	Wyreside Lakes	£475
35	York – A City for all seasons	£495
35	Yorkshire Dales & The Bridge Inn	£470
36	Terms & Conditions	
37	Terms & Conditions	
38	Customer Comments	
39	Customer Comments	



For bookings call 0161 947 9477

AMBER VALLEY & CRICH TRAMWAY VILLAGE

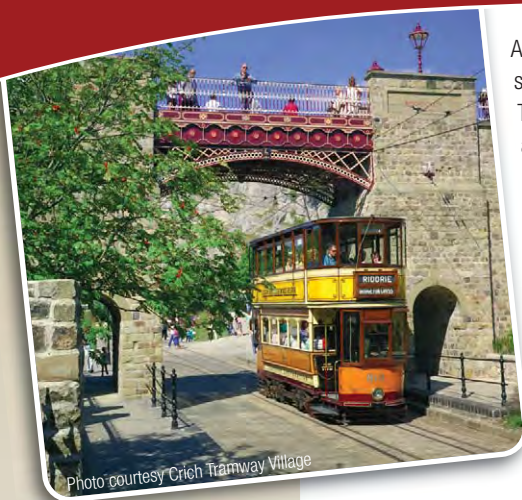


Photo courtesy Crich Tramway Village

Amber Valley is the heart of Derbyshire, we take you to see all the attractions such as Kedleston Hall, a National Trust property set in 800 acres of landscaped parkland and the river Belper. We then stop off at a suitable pub/restaurant for lunch. Afterwards we make our way to the Crich Tramway Village which gives a nostalgic glimpse of an earlier time. We then move on to the Factory Shops Trail which includes the superb Visitor Centre at Denby Pottery.

Cost of coach hire £475

BAKEWELL MARKET



Photo:prichdln@flickr.com

Try a day out at Bakewell market! There are tons of bargains to be had! With over 70 Stalls there's something for everyone! After spending a full enjoyable day out you'll then get to view some of the exciting villages on your drive back. We will visit places like the grounds of Chatsworth House, Eyam; which is the village of the plague and Stoney Middleton. All the villages are pagan villages and depending on the time of the year you may get to see the well dressings!

Cost of coach hire £445



For more information visit www.bellevue-mcr.com

BLACKPOOL AND/OR ST ANNES, CLEVELEYS, FLEETWOOD



The traditional seaside resorts with plenty of atmosphere, theatres, shops, bars, promenade walks, and a wide range of stores and restaurants.

Visit Cleveleys for bargain shopping at B&M's then (every Thursday) visit the 'Top Club' for free and easy entertainment at Cleveleys' WMC. Get in for fabulous home cooked food at 12 noon (at reasonable prices) and reserve your seats, (its busy after 1pm). It's fabulous entertainment from 2 – 4pm. 'DIY singing' with a pianist and drummer in the background. (Not to be missed)

You're sure to have a great time with little spending!

For fish and chips visit:

Kay's Fish & Chip Shop at Cleveleys Bus Station

Tel: 01253 862204

Cost of coach hire £445

BLACKPOOL ILLUMINATIONS



Board your coach around 3pm. We'll take you for Kay's special Fish & Chips in Cleveleys, followed by a stroll down the NEW £30M sea front (the change is unbelievable).

Around 7pm board your coach for the drive through the lights as we take in the scenery of the Blackpool Illuminations. (It is better enjoyed travelling from the North to the South. This is the best way to do it.) We arrive home before 10pm. (Depending on traffic).

Why not make a full day out of it and go shopping before hand. (B&M's in Cleveleys have some great bargains!) We can add anything in to make your day more enjoyable, please do not hesitate to ask.

Cost of coach hire £445



For bookings call 0161 947 9477

BLACKPOOL PARTY *The New President Hotel*



Why not try a FANTASTIC day out at The New President Hotel, Blackpool. The staff will look after your every need from a very warm welcome, to great food and an exciting afternoon's entertainment, including top tribute artist, such as Frank Sinatra, Tom Jones, Cliff Richards, Elvis and many more.

Our party afternoons run all year and are for senior citizens who enjoy wonderful homemade food, have a sing song, a dance and a game of bingo or two! All in the luxurious surroundings of the Kennedy's Cabaret Bar. There is a plush, modern room with excellent accessible facilities. The food is great with fabulous entertainment.

Enjoy a scenic ride out to the New President Hotel and enjoy a fantastic afternoon's fun with their team, they really will ensure you have one hell of a time! Arrive around midday with a welcome drink. Enjoy a three course meal and an afternoon of fun and enjoyment. We depart for home (if you can stop partying) around 4.45pm.

(Highly recommended!)

Cost of coach hire £445



For more information visit www.bellevue-mcr.com

THE BOURNE POACHER *Party afternoons for the young at heart*



Special party afternoons run throughout the year, especially for Senior Citizens who enjoy having a good time. Good all round entertainment and service with a smile. Why not enjoy the fun at the Bourne Poacher in Thornton, Cleveleys and enjoy a three course home-cooked meal followed by dancing, sing-alongs and even a couple of games of bingo. Special artistes will entertain you with music to suit all ages. Join Lee & Bill for some general dancing, or just sit back and enjoy the fun.

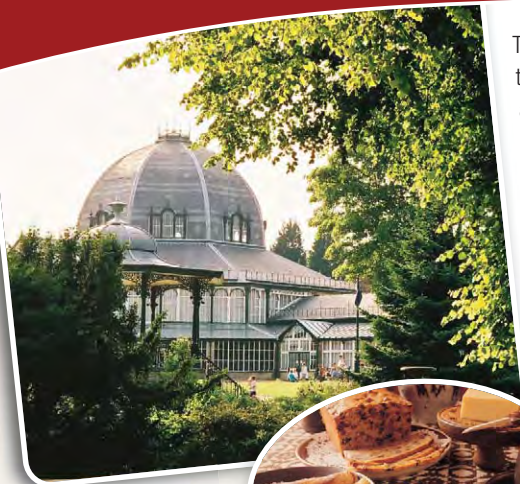
The Bourne Poacher is a family run establishment set in beautiful grounds and even has a gift shop for souvenirs. Arrive 12.noon for 12.30pm lunch, party finishes approx 4.45pm. Price from £14.00 per person for meal & party.

(Prices may vary throughout the year).

Bourne Poacher Tel: 01253 867481

Cost of coach hire £445

BUXTON & THE PAVILION GARDENS



There's an enjoyable scenic drive via Goyt's Moss and the famous Cat & Fiddle road with the highest pub above sea level in England. We eventually make our way to the historic spa town of Buxton. We stop for afternoon tea at the Pavilion Gardens, there is a wide selection of food at great value for money. There are also plenty of shops including the old roman baths which is now the "Cavendish Arcade" altogether Buxton is a beautiful and relaxing day out and we could only finish the day by returning home via Peak Dale and Chapel-en-le-Frith.



Cost of coach hire £445



For bookings call **0161 947 9477**

CHESHIRE DRIVE, RIVERSIDE PUB/RESTAURANT



Board your coach at 10.30am for a scenic drive through the Cheshire country lanes and villages, to arrive 12.00 noon for 12.30pm lunch at the Riverside Pub, Acton Bridge. This popular pub/restaurant has an extensive menu, why not treat yourselves to a chocolate indulgence sundae or an exotic fruits sundae (there's plenty to choose from). Then at 3.00pm board your coach for the relaxing scenic drive home.

(Times can be adjusted to suit your group).

Riverside Pub

Tel: 01606 852310

Cost of coach hire £445

CHESHIRE OAKS & CHESTER ZOO



Europe's largest outlet centre with over 140 stores with up to 50% off top brands from fashion to hardware. There is a 500 seater food court and additional restaurants and eateries situated around the centre.

Group incentives available

Tel: 0151 348 5612

Why not split your day into two. Why not head over to Chester Zoo for a fantastic afternoon? See all the animals and be amazed!

Chester Zoo:

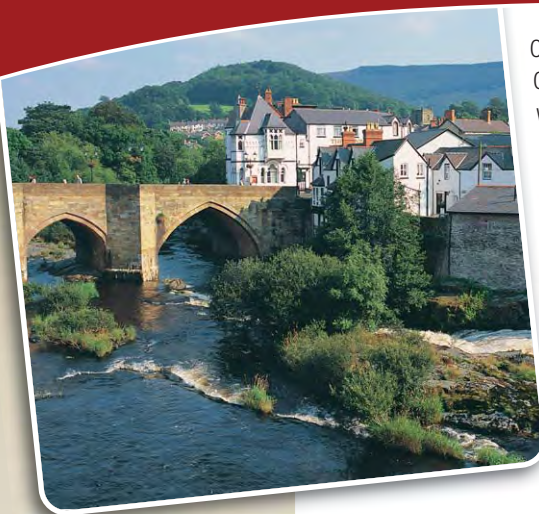
Tel: 01244 380 280

Cost of coach hire £435



For more information visit www.bellevue-mcr.com

CHESHIRE/SHROPSHIRE DRIVE & NARROWBOAT INN



Our first stop off will be Blakemere Craft Village in Cheshire for morning coffee and light shopping, then we take a leisurely drive through the Cheshire & Shropshire lanes where we will stop off at the Narrow Boat Inn for lunch. After which we head to the beautiful town of Llangollen for sightseeing of the town, market place and even possibly a canal cruise on the largest aquaduct in Great Britain, Froncysyllite. Our fabulous day must eventually end and we will take you home via the Horse Shoe pass and be home in time for dinner.

Narrow Boat Inn:

Tel: 01691 661051

Cost of coach hire £445

CHESTER, RIVER DEE CRUISE



The City of Chester is famous for its historic walls and marvelous architectural structures, superb shopping centre's, striking riverside walks and mouth watering restaurants. Once you have finished with Chester we can move onto the River Dee where you can cruise on the "Lady Diana" or "Mark Twain," both boats will give you unforgettable memories. Meals can be pre booked on showboats, which also have wheelchair accessibility.

Cost of coach hire £435



For bookings call 0161 947 9477

CLITHEROE MARKET & RIBBLE DRIVE



We start our day by Clitheroe's historic market town, which has held a regular market since the Norman conquest in the 12th century. It offers a wide range of products from Fruit and Vegetables, Bread and Cakes, Cheese and Biscuits, Fish, Fresh and Cooked Meats, Men's, Ladies and Children's Fashion, Craft Items, Pottery, Curtains and Fabrics, Carpet & Rugs, Towels and Household Textiles, Plants and even Electrical Goods. We then move on to the Calf's Head for an enjoyable lunch. Once you have finished lunch it's time to head home and we will take you home via Barrow, Whalley and Clayton Le Moors so that you get to see the beautiful countryside.

Cost of coach hire £445

CONWAY



An historic town with a mighty 13th century castle & picturesque quay. See the smallest house in Britain lived in by a 6'3" fisherman until May 1900. The quayside area is level but the town streets within the old walls are narrow and sloping.

Afterwards we can go on to Llandudno, (Queen of the Welsh resorts) for the rest of the day.

Cost of coach hire £445



For more information visit www.bellevue-mcr.com

EDEN CAMP



A 10.00am departure takes you on a visit to the unique Eden Camp where you are transported back to Wartime Britain. Experience the sights, sounds and even the smells of those dangerous years. Enjoy Dambusters Stew & Dumplings or Churchill Pie as you soak up the nostalgia.

(Must Pre Book)

Set meals also available depending on Rationing & Blackmarket Availability.

Eden Camp

Tel: 01653 697777

Cost of coach hire £475

THE HANGING GATE



Depart 11am for a relaxing drive to the very popular Hanging Gate Restaurant in Chapel-en-le-Frith. Arrive 12 noon where you will enjoy an excellent meal with Christmas carols and Christmas cheer. Please book early as this is a very popular venue.

The Hanging Gate

Tel: 01298 812776

Website:

www.hanginggate-chapel.co.uk

Cost of coach hire £405



For bookings call **0161 947 9477**

HEARTBEAT & WHITBY



Discover the village (Aidensfield known as Goathland) of the hit TV series Heartbeat, we stop off for tea and coffee at a local café, this also gives you the opportunity to roam about the village. Visit places such as the train station in the film Harry Potter or the church where Bram Stoker wrote the famous book "Dracula".

We swiftly move onto Whitby where St Hilda's Abbey dominates the skyline. Along the quayside there is plenty to choose from for your afternoon lunch such as restaurants, café's, fish and chip shops and of course fresh sea food. We then cruise along the most spectacular country side Yorkshire has to offer on the way home. A day to remember!

Cost of coach hire £475

KNOWSLEY SAFARI PARK



Enjoy the thrill of a 5 mile safari from the comfort of your Coach! Watch the Otters at play, see the cheeky Meercats, marvel at the spectacular herds of Elephant, Zebra & Wilderbeast or the majestic Lions & Tigers lazing in the sun. The drive takes you round the vehicle friendly route by-passing the Monkey Jungle.

Knowsley Safari Park

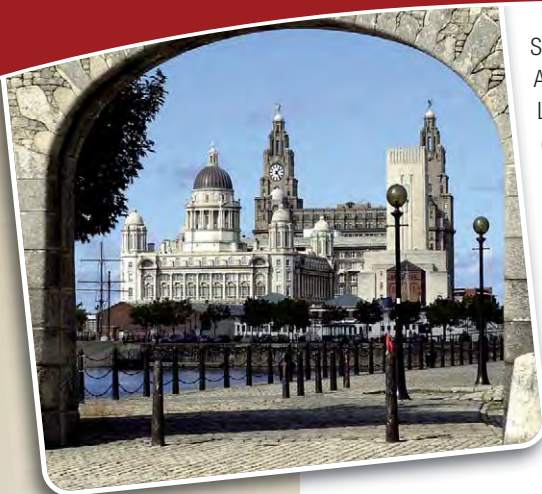
Tel: 0151 430 9009

Cost of coach hire £425



For more information visit www.bellevue-mcr.com

LIVERPOOL



See Liverpool by land & water with Liverpool Ducks. A unique one hour amphibious sight seeing tour of Liverpool's historic waterfront, city and docks. (At present wheelchairs cannot be carried).

The Yellow Duckmarine

Tel: 0151 708 7799

Or simply browse the many attractions of Albert Dock. Why not visit Liverpool ONE which is a huge 1.65 million sq ft of shopping and leisure, which includes 160 shops, more than 20 bars and restaurants, a fantastic 14 screen cinema and a 5 acre park.

Cost of coach hire £395

LLANDUDNO



Llandudno is Wales's largest resort, uniquely situated between the Great and Little Ormes with two wonderful beaches, the award winning North Shore and the quiet, sand dunned West Shore. The scenery across the bay has to be seen to be enjoyed and Llandudno has kept its Victorian and Edwardian elegance and splendor, despite its modern attractions.

For food, The Queens Hotel pride themselves on their excellent and varied cuisine, prepared by their highly qualified chefs and they're equally proud of their friendly and efficient service. Special diets can be catered for, by prior arrangement. An extensive lunch and snack menu is served daily from 12 until 2pm. Afternoon teas and snacks are available daily from 2.30 until 5pm. The Queens Hotel can accommodate groups of up to 200 guests for lunches or afternoon teas. The use of one of their Ballrooms can be made available, if required.

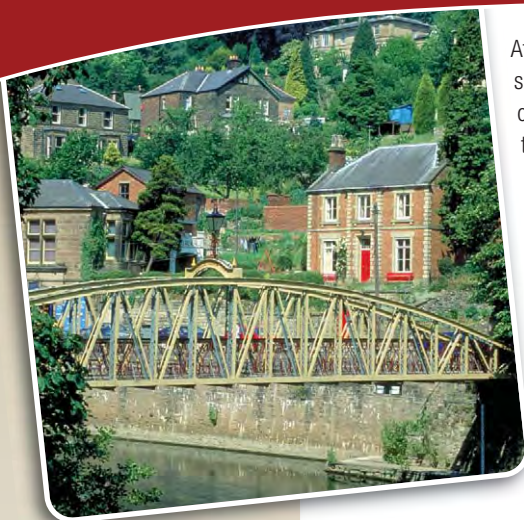
The Queens Hotel Tel: 01492 877 218

Cost of coach hire £445



For bookings call 0161 947 9477

MATLOCK BATH & MASON MILLS SHOPPING VILLAGE



At Masson Mills you will find four floors of quality shopping. A wide range of retailers offer a huge variety of goods from pans to perfumes, golf clubs to gifts, there's literally something for everyone. If you need a break Arkwright Tea Room offers traditional snacks or why not enjoy a meal in The Derwent Restaurant overlooking the river.

After an enjoyable day shopping and browsing, board your coach for the relaxing journey home, taking in the beautiful Derbyshire scenery.

Masson Mills Shopping Village

Tel: 01629 760208

Cost of coach hire £450

MEADOWHALL SHOPPING CENTRE



Leisure shopping that caters superbly for the disabled. Five themed areas providing a rich variety of shopping choice. The Oasis area where you can relax, have a quick bite to eat or a leisurely meal whilst watching a continuous program of entertainment on Meadowhall Television. The Hall includes shops such as Monsoon, Debenhams, Ann Harvey, Marks & Spencer's, Zara and Thornton's (for all you chocolate lovers!) A marvelous shopping extravaganza, with a beautiful pennine drive home via Woodhead or Snake Pass.

Cost of coach hire £395



MARKET DAYS



DEWSBURY MARKET **MONDAY**

This is one of the best markets in Yorkshire with over 400 stalls, with plenty of restaurants to choose from you'll be overwhelmed.

Cost of coach hire £425

CHESTERFIELD MARKET **TUESDAY**

With over 250 stalls Chesterfield is one of the largest open air markets in the country, once you have finished shopping you can always check out the 'famous crooked spire of St Mary & All Saint Church.'

Cost of coach hire £425

CLITHEROE MARKET **TUESDAY**

Clitheroe is an historic market town, which has held a regular market since the Norman conquest in the 12th century. The market is an important institution which has a considerable impact on the personality of the town.

Cost of coach hire £425



SKIPTON MARKET **MONDAY / WEDNESDAY / FRIDAY**

This attractive town has a huge variety of shops & Market Stalls. Once finished with your shopping why not have a meal at "The Craven Heifer" (01756 792521).

Cost of coach hire £425

RIPON MARKET **THURSDAY**

This market dates back all the way to 1781, the cathedral city is perfect for a market place of its size. A good restaurant not far away is Lighwater Retail Village Tel: 0871 7200011.

Cost of coach hire £495

LICHFIELD MARKET **FRIDAY / SATURDAY**

This town is full of architectural inspiration because of the Tudor & Georgian buildings. The Market itself has a big variety, plus why not check out the medieval cathedral with three spires?

Cost of coach hire £495



YORK (NEWGATE MARKET) **SATURDAY / SUNDAY**

Newgate market has 110 stalls in a market square within Europe's largest single pedestrianised area. Prominent since the Middle Ages, Newgate market is the heart and soul of the city lying between The Shambles and Parliament Street.

Cost of coach hire £495

Cost of coach hire £425 – £495



For bookings call **0161 947 9477**

THE MILLSTONES



Depart 10.00am for a leisurely drive to the Millstones Restaurant, near Harrogate for lunch followed by an afternoon's entertainment. (Meal stops, war time musicals, Christmas parties). Later, tea & biscuits are served before departing for home at 4.00pm.

The Millstones Tel: 01423 770672

(Please contact Margaret)



Cost of coach hire £475

MORCAMBE BAY & HARTS RESTAURANT



Image courtesy of Lancaster City Council

One of the wonders of the North. The largest expanse of intertidal mudflats and sand in the UK with abundant bird life and varied marine habitats living across the bay. (There is a bird observatory at Walney Island.) The bay is famous for its fast moving tides. The bay makes a beautiful landmark for taking in some delightful coastal scenery such as the changing face of the tidal streams and the view of the Lake District Peaks in the background.

Harts Restaurant is recommended for a lunch. Used as a location for Lawrence Olivier's film, *The Entertainer*, Hart's reputation for English fayre served in an atmosphere of silver teapots, maple floors and crystal chandeliers is always a popular place to stop.

Hart's Restaurant Tel: 01524 410307

(Disabled toilets are adjacent to Hart's)

Cost of coach hire £475



For more information visit www.bellevue-mcr.com

ORMSKIRK MARKET & SOUTHPORT



By kind permission of Sefton Tourism

Combine a trip to the seaside with a visit to Ormskirk's busy market, as vibrant today as it was in 1286 when first established by the monks of Burscough Priory. With nearly 150 stalls selling locally grown produce, clothing, furniture & household goods, you're sure to find a bargain.

In the afternoon we take in the delights of Lord Street and the beach in sunny Southport.

Cost of coach hire £425

PEAK SHOPPING VILLAGE



Discount fashion, craft courtyard, Hornsea Pottery, restaurant, coffee shop, ice cream parlour, all combined with a drive through the beautiful Derbyshire countryside. Free wheelchairs are now available at the management office or call ahead to book **Tel: 01629 735326**

Afterwards why not travel to Chatsworth House?

Chatsworth's tradition of welcoming every visitor warmly still continues and we have an exciting range of events and entertainment for visitors to enjoy, from firm favourites like the International Horse Trials and the Country Fair, to our expanded Florabundance spring flower festival and our new Textile workshops and outdoor Discovery days.

Cost of coach hire £425



For bookings call 0161 947 9477

OSWALDTWISTLE MILLS SHOPPING VILLAGE



**Group Benefits - (Up to £21
worth of vouchers for the
organiser!)**

Super Deals

Seasonal Savers

Cabaret Shows

Christmas Packages

Winter Blues Buster

Lancashire Tours

Shop & Itineraries

By the 1800's, hundreds of workers would stream through the doors of the mill into the clattering atmosphere of what is now the Weavers Court. History has come full circle: modern day Oswaldtwistle Mills now welcomes thousands of coaches a year. Last year they had 1,402,000 visitors!

The Mill has won many industry awards such as 'Best Mill Shop & Factory Outlet' (for the fifth year running), 'The UK Coach Awards' and finalist for 'Best Shopping Venue for Groups in the UK.'

The Mill is made up with a community of enthusiastic concession owners. A vibrant mixture of high profile stores and burgeoning family businesses. You can buy scented candles, craft supplies, sewing machines, sparkling lamps, figurines, contemporary furniture, local interest books, a great range of clothing, shoes, kitchen ware, perfumes, old fashioned sweets, and there's plenty of choice for places to eat – Café Nove, The Hungry Tackler and The Pavillion Coffee Shop.

Intrigued by Oswaldtwistle Mill's history? Visit the Heritage Centre for the historical run down. It is fascinating. Find yourself drawn back into childhood by the scent of Stockley's Sweet Shop. Take the Nature Trail and discover their Wildfowl Reserve or simply enjoy the landscaped gardens. A special events calendar can be viewed at www.o-mills.co.uk where you can keep updated on news and craft workshop dates.



We also provide guided tours in and around the local area with a qualified tour guide. With breath taking scenery we can visit Pendle Hill, Cliviger Gorge and The Ribble Valley. There are 4 local tours that really show Pennine Lancashire at its best, you can combine a visit to Oswaldtwistle Mills with one of their guided tours from only £1.95 per person. Tours include: Tales from Pendle Witch Country, A Visual Panorama, The Three Rivers, & Moorland Highlights. We can combine any of the tours and arrange bespoke tours to your requirements. Please call the Mill for further details and information.

Cabaret Shows

A range of cabaret shows are on offer (with special packages early each year in January & February). Prices start form £8.95 per head and include a 3 course meal, entertainment and shopping. Where else would you get all this under one roof? Shows are available on Mondays and Fridays.

(Free meal for organiser on parties over 30+ when a party meal is booked).

Full details at www.o-mills.co.uk

Call the Group Bookings Team Tel: 0800 9881 550



Cost of coach hire £425



For bookings call 0161 947 9477

PARTY AFTERNOONS!



The Bourne Poacher!
(Cleveleys) See page 9



The Hanging Gate!
(Chapel – en – le Frith)
See page 13



**Wensleydale – A Grand
Day Out (Yorkshire)**
See page 32



The Lindum Hotel
(St Annes) See page 29



**The New President!
(Blackpool) See page 8**



**The Talbot Hotel
(Southport) See page 28**



**Oswaldtwistle Mills
(Lancashire) See page 20/21**

Belle Vue provide a range of marvelous party afternoons where you can escape the normal humdrum day and get out for a lovely scenic coach drive with some fine food and entertainment in some great surroundings.

Why not try one to have some fun with your group and live a little?

We have some great locations. Check out the page in question for the party of your choice!



For bookings call 0161 947 9477

RACECOURSES 'A day at the races'

RACE DAY

Enjoy a full day out at any one of the following racecourses! (Place a bet on your lucky number and see what you could win). The atmosphere is phenomenal and there is no other like it, it is truly a remarkable day out. Take in the horses before the race and smell the atmosphere at the bookies stand when placing your bets!

We can also stop off in the morning for breakfast (if you wish) or on the way back for dinner. We can help plan your perfect day out. Make a day of it. The dates are as follows:



AINTREE RACECOURSE

23rd of October 2010,
24th of October 2010
21st of November 2010

Cost of coach hire £425

HAYDOCK RACES

1st/2nd/10th of July 2010
5th/6th/7th of August 2010
4th/14th/24th/25 of September 2010
27th of October 2010
4th/18th/20th/30th of November 2010
18th/30th of December 2010

Cost of coach hire £395

YORK RACES

9th/10th/23rd/24th of July 2010
17th/18th/19th/20th of August 2010
5th of September 2010
8th/9th of October 2010

Cost of coach hire £475

UTTOXETER RACES

27th of June 2010
6th/14th/22nd/26th of July
8th/19th of September 2010
3rd/13th/29th of October 2010
13th of November 2010
17th/31st of December 2010

Cost of coach hire £445

CHESTER RACES

25th/26th of June 2010
9th/10th of July 2010
1st/21st of August 2010
10th/11th/25th of September 2010

Cost of coach hire £445

Cost of coach hire £395 – £475



For more information visit www.bellevue-mcr.com

RIVINGTON HALL BARN



Locally called 'The Lower Barn', the Great House Barn stands on the main approach road into the park and is open every day for teas, light meals and delicious snacks including home baking. Party nights for Senior Citizens who are young at heart. High Tea served between 4.30pm- 6.00pm, followed by Bingo, Dancing & sing-a-long until 10.30pm. Some afternoon party dates also available 12 noon to 4.30pm.

Tel: 01204 697738

(Book early as this is VERY popular!)

Cost of coach hire £425

SETTLE – FOR A GREAT DAY OUT



Take a scenic drive through the Yorkshire Dales to this lovely unspoilt market town. The weekly market has been held every Tuesday since 1249.

The Watershed Mill Visitor Centre where you can buy quality woollens, pottery and local craftwork.

Hectors Coffee Shop Tel: 01729 825539

serves traditional Yorkshire fayre

Cost of coach hire £450



For bookings call **0161 947 9477**

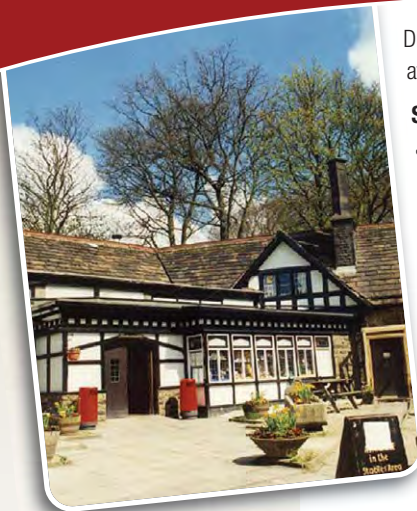
SHREWSBURY



The town centre is packed with timber-framed black & white buildings, steep narrow streets and alleyways. In fact it boasts over 600 listed buildings including the Castle, now a regimental museum and the world-famous Shrewsbury Abbey, home of the fictional Brother Cadfael. Charles Darwin was born and educated in Shrewsbury and all around you will find reminders of his association with the town. The River Severn forms a loop around the town centre offering gentle riverside walks or you can enjoy a trip on the new pleasure boat Sabrina. Next to the river you can relax in the beautiful Quarry Park, location for the annual Shrewsbury Flower Show.

Cost of coach hire £445

SMITHILLS COACHING HOUSE



Dine where the price won't spoil your appetite. Olde Worlde atmosphere. Special O.A.P Lancashire Lunch served daily at 12noon.

Smithills Tel: 01729 825539

Serves traditional Yorkshire fayre

Smithills Entertainment Afternoons. Enjoy an afternoon in a theme of your choice. Five professionally produced shows.

The Banjo Man with Bingo

The Entertainers

Sing- a-long and Bingo

Cabaret Afternoon

The Old Stagers Fun Show

All shows include a 3 course meal - Lancashire Lunch

From £14.00 per person

Cost of coach hire £395



For more information visit www.bellevue-mcr.com

SNOWDONIA MINI TOUR



In this journey we travel along the vale of Conway right the way up to the picturesque Betws-y-coed, where we will have a light refreshment break. We then see the Swallow Falls, the ugly cottage (which is beautiful), the old stage coach route, Llanberris pass, electric mountain and all the way to Anglesey. Here we will drop you off at the world famous Pringles outlet store. Later on we travel along the A55 Coast Line with panoramic views of Anglesey and Puffin island.

Cost of coach hire £495

SOUTHPORT



The tourist board really have pushed the boat out these last few years gearing Southport up as a major tourist resort. There are 22 miles of beautiful coastline and some of the most elegant parks and gardens you're ever likely to visit. There is 'Lord Street' famous for its fine shops. The Promenade, Marine Lake, Pier, Zoo, Parks and Gardens make for plenty to do and see. There are many snack bars and restaurants to take lunch in. A delightful Victorian resort awaits you for an entertaining day.

The Talbot Hotel Tel: 01704 533975 (Highly recommended).

A good meal stop, serving lunches, high teas and afternoon teas. (Must be pre-booked).

Cost of coach hire £425



For bookings call **0161 947 9477**

SOUTHPORT AND THE TALBOT HOTEL



Enjoy an entertaining day out at The Talbot Hotel in sunny Southport. The facilities are fully accessible and the reception is second to none. The team really are most courteous and go the extra mile each and every visit. Arrive at 12 noon dine at 12.30. Party afternoons include trips down memory lane in their British Afternoon Specials. The Talbot also do Turkey & Tinsel Dinners and we highly recommend this venue. Menus include vegetable soup, roast beef dinner and apple pie and cream, tea/coffee biscuits and sweets on the table.

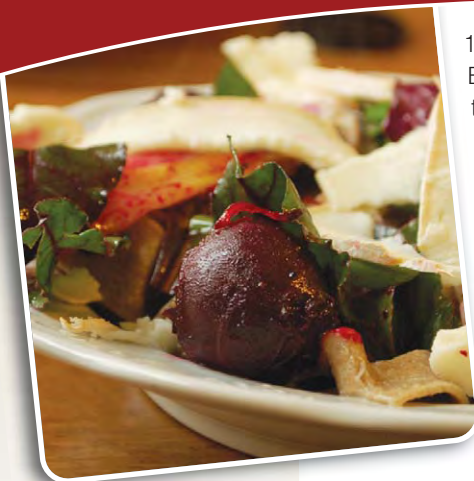
Prices from £12.99 per person (*musical afternoons*) and £10 per person for a two course shopping lunch stop.

A good meal stop, serving lunches, high teas and afternoon teas. (*Must be pre-booked*).

The Talbot Hotel Tel: 01704 533975 (*Highly recommended*)

Cost of coach hire £425

STAFFORDSHIRE ROACHES DRIVE



10.00am start for this lovely drive by Rushton Spencer and Biddulph Moor, perhaps stopping for 12.00noon lunch at the 200 year old Rudyard Hotel situated at the side of Rudyard Lake. At 2.00pm board the coach for the leisurely drive home passing through Leek and the Staffordshire Roaches (if you are lucky you might see some wallabies living wild on the heather moors) then home via Fernilee and Whaley Bridge.

The Rudyard Hotel, Rudyard Lake Tel: 01538 306208

If you don't fancy a stop at The Rudyard Hotel, why not go to the old market town of Leek where there is an open air market of over 100 stalls held every Wednesday.

Cost of coach hire £445



For more information visit www.bellevue-mcr.com

(LYTHAM) ST ANNES – THE LINDUM HOTEL



St Annes is a traditional coastal village which is truly one of the gems of the North West. The Lindum Hotel is situated on the main promenade, opposite all the seafront amenities, and is within easy walking distance of the elegant Edwardian town centre, where you can visit the local shops and take in some shopping! You can take in the scenic views of the sea along the promenade and village green where the historic windmill is situated. With its continental markets, and flourishing gardens Lytham St Annes really has something on offer for everyone.

Try a stop over lunch at **The Lindum Hotel Tel: 01253 721534**
Or from £15 per person try one of their Festive Christmas lunches including a 3 course lunch, tea and mince pies and cracking entertainment . Arrive 12 noon for lunch at 12.30. Entertainment from 2-4pm.

Cost of coach hire £445

STAPELEY WATER GARDENS



Enjoy a great group day out at Stapeley Water Gardens. Explore dazzling plant life, step out into beautiful Italian Gardens, and stroll by the tranquil water gardens. For some retail therapy, a trip to the enormous garden centre is a must with fabulous selections of plants, gifts, clothing, camping and outdoor equipment and even an Angling Centre. You can enjoy a meal or bite to eat from their choice of dining facilities.

- Discounted admission for groups of 15 or more
- Fully accessible attraction catering for all ages
- Quality assured visitor attraction
- Finalists for 'best attraction for group visits – short visits' in 2006

To make a booking call **01270 628628** or
email palms@stapeleywg.com

Cost of coach hire £425



For bookings call 0161 947 9477

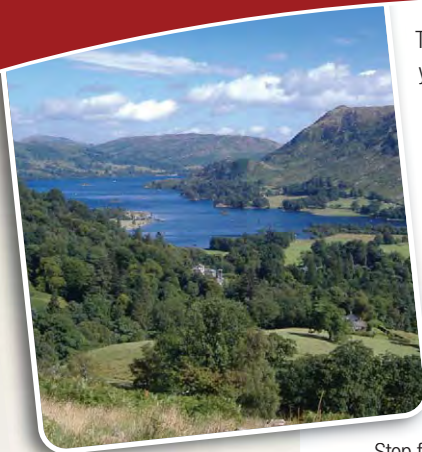
THE TRENTHAM ESTATE



Why not indulge in a little retail therapy at “The Shopping Village” with a collection of carefully selected shops offering a wide range of products. You’ll find everything from furniture to contemporary art, accessories to ice cream and clothes to cookware. Once you have finished shopping and had a spot of lunch you can head over to the “Italian Gardens”. This is the jewel in the crown for Trentham Estate, the historic Italian gardens are one of the most impressive, significant and important garden projects in Europe. Overall a fantastic day out!

Cost of coach hire £445

ULLSWATER & THE INN ON THE LAKE



To many people Ullswater is simply the perfect destination. Whether your quest is for sublime natural beauty or the best opportunities for outdoor activity along with interesting indoor attractions, Ullswater’s nine mile length will provide the perfect setting and location.

The main reason for Ullswater’s appeal is immediately evident from whichever direction it is approached. The lake is seen against a breathtaking backdrop of mountain scenery. It is a truly dramatic picture, made all the more memorable by Ullswater’s mirrored surface and a gently curving shoreline of green fields, woodlands and sheer rock faces rising from the lake.

Ullswater ‘Steamers’ Tel: 017684 82229

(They provide a range of tours, call for latest details!)

Stop for lunch at **‘The Inn on the Lake Hotel’ Tel: 012684 82444**
(Enjoy spectacular settings with lawns sweeping down to the shores of the lake.)

Cost of coach hire £495



For more information visit www.bellevue-mcr.com

WELCOME DAYS OUT



Outings for group visitors full of variety and fun in the company of an experienced tour guide. There are so many tours to choose from, you're sure to find something to suit just everyone. *Cost of coach hire only.*



River In The Sky	£495	The Wirral Way	£465
Flight Of The Osprey	£495	The Pendle Way	£465
Poachers Hideaway	£495	Markets & Medieval England	£465
At The Heart Of The Hills	£495	Mystical Celts & Vikings	£465
Enchanting Green Shire	£570	Seaside To River Source	£495
Bridge O'Er		Wharfeside Travels	£465
Whispering Waters	£465	Chocolate Heaven & The Valley Of The South Ribble	£465
At The Borders	£495	Follow The Pack Horse Trail	£465
The Ancient Salt Routes	£465	Festival Of Christmas	£465
Castles & Countryside	£495		
Cheshire's Treasures	£465		
Along The Silk Road	£465		

Just telephone Welcome Days out for a copy of their itinerary brochure, you will be spoilt for choice at the variety of tours on offer.

Welcome Days Out Tel: 01691 831945



Cost of coach hire £425 – £570



For bookings call **0161 947 9477**

WELSHPOOL WHERE WALES BEGINS



Welshpool offers a unique blend of shops where you can pick up items that you may not find elsewhere. The town prides itself on its friendly shopping environment, the many quaint passages and bustling streets ensure the traditional market towns atmosphere remains today.

Visitors can admire the Tudor buildings and eat in a variety of cafes, restaurants, traditional inns & pubs.

Cost of coach hire £445

WENSLEYDALE A GRAND DAY OUT



Enjoy the Wensleydale Experience with a scenic drive to Hawes (market day Tuesday), with an optional stop at The Wensleydale Creamery for delicious homemade cakes, scones and pastries with speciality coffee & Yorkshire tea served in the Creamery Coffee shop.

Or relax in the Buttery Licensed Restaurant, serving freshly ground coffee, tea, cheese snacks or an excellent 3 course meal. On hot summer days try the locally made ice cream.

The Specialist Cheese Shop offers the opportunity to purchase a wide range of premium quality cheeses.

The Wensleydale Creamery

Tel: 01969 667664

Cost of coach hire £495



For more information visit www.bellevue-mcr.com

WINDERMERE



Enjoy the beautiful scenery of England's largest lake and explore the many quaint gift shops. There are many tea rooms and cafes to be found in Bowness-on-Windermere. Enjoy a pleasant trip on one of the steamers on Lake Windermere, Swan & Teal are both suitable for wheelchair bound passengers. Enjoy lunch first at the Burnside Hotel (Tel: 015394 42211) in Bowness. Steamer trips can be booked on the day at the kiosk near by.

Or book a meal and a cruise at the **Ship Inn Tel: 015394 45001** they can arrange 2 or 3 course lunch then either a ½ hour, 1 hour or 90 minute cruise.

Stop off en-route for bargains & refreshments at the **K Shopping Village Outlet near Kendal Tel: 01539 732363**

Cost of coach hire £495

THE WINKING MAN



The outward journey takes you through scenic Derbyshire climbing 1500 feet above sea level stopping for lunch at The Winking Man. The pub takes its name from part of the Roaches called Ramshaws Rocks where a face in the rocks seems to wink at you as you drive up the hill. This welcoming pub serves all traditional home cooked food and has a friendly family atmosphere so you are bound to have a wonderful day out.

After your meal it's time to board your coach for the journey home passing through the Staffordshire Roaches.

Always a favourite with our customers.

To book your meal at:

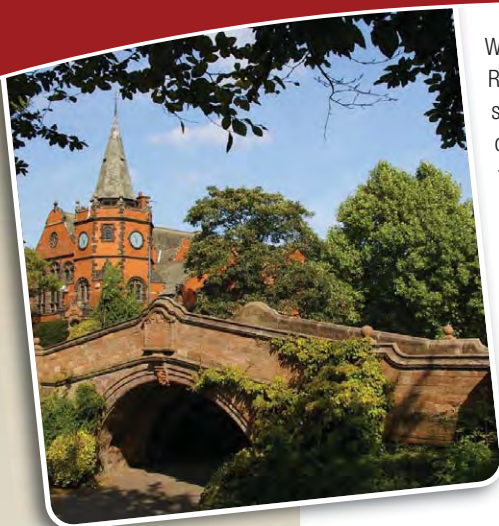
The Winking Man Tel: 01538 300361

Cost of coach hire £445



For bookings call 0161 947 9477

WIRRAL



Wirral peninsula is placed between the River Dee and the River Mersey, overlooking both the Welsh Hills and the spectacular Liverpool skyline. Well connected to the rest of the country, Wirral is the ideal location for those wanting to get away from it all. Discover the beauty of Wirral's breathtaking coastline, and invigorate your senses.

Wirral's 25 miles of dramatic coastline provides a fantastic backdrop to a great day out. Leisurely drive along the coast road round the Wirral Peninsula, an area of outstanding natural beauty stopping off at Port Sunlight. The Lady Lever Café serves light refreshments, lunches or afternoon tea.

The Lady Lever Café Tel: 0151 478 4138

Cost of coach hire £435

WYRESIDE LAKE



The fisheries are a great place to escape the busy motorway network and have a chance to take in the back lanes of the Trough of Bowland and the beautiful countryside.

Once we arrive at the fisheries you can relax and take in the magnificent view through the windows at the Fisherman's Rest. This is a fully refurbished function room, afternoon entertainment is provided with a mouth watering choice of meals to suite all tastes. This is a fabulous day NOT to be missed. (Seriously!) Sit back and enjoy a drink whilst taking in the magnificent views of the Trough of Bowland from your chair.

Or if you prefer, we can call in at one of the local towns of Lancaster or Morecambe after lunch for a great shopping experience.

Wyreside Lakes Tel: 01524 792093

Cost of coach hire £475



For more information visit www.bellevue-mcr.com

YORK - A CITY FOR ALL SEASONS



Renowned for its exquisite architecture, tangle of quaint cobbled streets and the iconic York Minster, York is fast developing a flourishing, cutting-edge scene. Delve into the city's vibrant café culture. A city of contrasts and exciting discoveries, York is a place where the old encompasses the new and the commonplace meets with the unexpected or a variety of festivals held throughout the year catering for all ages and interests.



Visit York Minster and be enriched in one of Europe's most inspiring cities. There are plenty of Olde Worlde shops and Newgate Market the largest in the area opens daily, offering a huge selection of quality goods.

Take time out to enjoy some of the country's most talented street entertainers or simply watch the world go by while sipping a drink by the river.

Cost of coach hire £495

YORKSHIRE DALES & THE BRIDGE INN



We take a pleasant drive through the Yorkshire Dales. This National Park covers some of England's most beautiful and inspiring countryside. Welcoming 9M visitors every year.

Described as wild, expansive, tranquil, awesome and even bleak, the park is one of the finest upland areas of Britain.

We travel on to the pretty villages of the Nidderdale Valley to Pateley Bridge stopping at the very popular Bridge Inn at Foster Beck for lunch or afternoon Tea.

To book your meal at:

The Bridge Inn Tel: 01423 711484

Cost of coach hire £470



TERMS AND CONDITIONS

Hereon Belle Vue Manchester Limited will be known as the company. The Customer will be known as The Hirer. By signing and returning the acceptance booking form, The Hirer has entered into a binding contract with The Company. It will be deemed that The Hirer accepts responsibility by himself / herself for every person in his / her party and fully agrees to the conditions of hire as follows:

1. **Parking Fees.** All parking fees are to be paid by the customer.
2. **Departure Times.** All collection times and departure times are to be adhered to at all times unless agreed otherwise with the Management (not the driver).
3. **Payment.** For all jobs over £100, a deposit of £100 is required to secure the booking and the remainder must be paid 14 days before departure. Failure to pay in full 14 days before departure will cancel the booking and all deposits will not be returnable.
4. **Breakdowns.** Every effort is afforded to ensure the service ability of the vehicles. In the event of mechanical failure of a vehicle during a journey a replacement vehicle will be issued at the earliest opportunity. No refunds will be given what so ever. No monies will be given for loss of ticket costs and travel expenses of any sort. If the vehicle has to be changed prior to the booking for whatever reason a similar or alternative vehicle will be supplied at the discretion of the company. If this is unsatisfactory a refund will be given.
5. **Alcoholic Beverages, Food & Drink, Chewing Gum, Illegal Substances and Smoking** are not permitted on the vehicle. Failure to comply with this will result in the driver asking passengers or the party to leave the vehicle. (Drinks may be included and consumed on the vehicle as part of an executive package by special arrangement).
6. **Abuse.** Any passengers causing abuse either verbal or physical to any other person including passengers, members of the public or the driver, they will be asked to leave the vehicle and the Police will be informed immediately.
7. **Damages to Vehicle.** The Hirer shall be fully responsible and liable for any damage caused inside or outside the vehicle by the Hirer or any member of his / her party however caused. This includes incitement to ANY third party, which results in damage to the vehicle or its contents. The Hirer will agree to be liable for the total retail cost of the repair.
8. **The Drivers Rights.** The driver reserves the right to refuse admission to any person/s who he/she considers unfit to travel in the vehicle for what-ever reason. They can also refuse to continue the journey if any person behaves in a manner which may be detrimental to other people, or the vehicle and its contents. In this event no refund will be given.
9. **Luggage.** All luggage must be kept in the boot or side lockers on coaches. Hand luggage only is allowed in the vehicle. Walkways must be kept clear at all times in case of an emergency.



10. Delays. Any delays caused by traffic will not entitle the customer to refunds. At the discretion of the management part refunds may be issued in the case of severe delays caused by Belle Vue.
11. Cancellation. Cancellation of bookings will result in the customer losing their deposit. If cancellation is within 24 hours of the booking being carried out the customer will lose all monies paid.
12. A valeting charge of £100 will be levied, through misuse by The Hirer from food, drink or illness, or what ever the retail cost may be if in excess of this amount to rectify said damage caused.
13. Personal Possessions. Belle Vue Manchester Ltd will not be held responsible for personal possessions left on the vehicle.
14. All booklet prices are based on a group basis, a collection point in Stockport or the surrounding area and include the loading of up to three wheelchair passengers. Outside of these limitations, there may be a small additional charge.
15. The Company reserves the right to alter prices prior to accepting your reservation.
16. Any attractions/hotels etc., mentioned are suggestions only and organisers should make their own enquiries as to the suitability of such destinations. The Company accepts no responsibility for costs incurred or for the quality of service received at such venues.
17. All our coaches are fitted with SEATBELTS and each passenger must ensure he/she wears a seatbelt when the vehicle is in motion.

We wish all our customers a happy and memorable journey.





For bookings call 0161 947 9477

CUSTOMER COMMENTS

Dear Sir

I'm writing to thank all those at Belle Vue Coaches for the superb day we had with you last Wednesday when our driver Rob Stennings took a party of 41 from St. Joseph's Church in Stockport to Llandudno. His helpfulness and friendly nature, together with the punctuality and tidiness of the coach made for a wonderful day. All passengers have asked me to pass on my thanks to the company, and Rob especially for the first class level of service. We look forward to travelling with you again.

Yours Sincerely

Alastair Taylor St. Joseph's Monday Club

Dear Peter

I just wanted to be in touch to let you know that our pilgrimage was a great success. All our detailed plans worked out, despite the best endeavours of the weather (which only scuppered an on-foot boat trip to Fingal's Cave on the island of Staffa), and in particular how much we appreciated Mike's care, courtesy, good humour and careful attention to detail. It was a pleasure to work with him.

We would be grateful if you would let him know we have been in touch with you, and in closing, to say that the vehicle too was perfect for our party, and we look to you again were we to run a similar trip of that size.

Yours Sincerely,

Mark

Dear John,

I am writing to give feedback after our bookings on the 4th and 7th March. Both our drivers - Viv Harrison on the 4th and Rich on the 7th, provided excellent service. They were both punctual, helpful and friendly. We will definitely use your company again following this good service.

Regards,

Becky Parkhurst

Dear Sir,

I am writing to thank you on behalf of our members for a lovely drive to Millstones last Wednesday. Special thanks to Ian for his punctuality, commentary (a first for us), good driving and good humour.

May I take this opportunity to inform you that I shall be retiring from my post of Dysphasia Support Organiser with the Stroke Association in August. I will be passing on your brochure etc to my successor.

Yours sincerely

Vivien Abbott



Just a short letter to thank tom for all he has done for us, and everyone else on his coach. Tom puts his self out to help us all I would like to see Tom's photo on your next brochure, so people can see what a charming man he is.

Mrs Hamer

This Letter is to give a big thank you to the driver, "Mike", who handled the whole crisis in a calm and efficient manner He stopped some of the passengers becoming agitated by is light hearted banter and worked totally above and beyond the call of duty. The guide "Pat" also worked hard when trying to locate the "lost lady" and our thanks also go to her. We all appreciated how the whole episode was handled and what you to convey our thanks to both Mike and Pat.

Doreen Lloyd

Dear Phil,

This is just an e-mail to say thank you for such wonderful drivers for our trip to Paris - Mike and Viv Harrison.

As the trip organiser I felt so relieved to have such fantastic drivers to accompany us on the trip and knowing that we were in such safe hands for the whole journey was brilliant! I really felt that they went above and beyond what was required of them and were so enthusiastic all the time. We could not have asked for anything more. Thank you so much once again, i only felt it right to express my thanks to you and your company, these drivers were an absolute credit to you. Please pass on our thanks to them as well.

Yours sincerely,

Jenny Hogg

Dear Sir,
Yesterday we at Denton West End Probos Club enjoyed a pleasant day's excursion to Bodmant Gardens and Llandudno. Our driver was Phil and at the request of many members I have been asked to express our appreciation of him. He was most courteous and helpful, especially in handling our disabled member. His driving was very professional in every aspect and as a driver of more than 50 years experience myself i was most impressed. If at any future engagement we would be more than pleased to see Phil.

Yours Sincerely

Harry Davenport

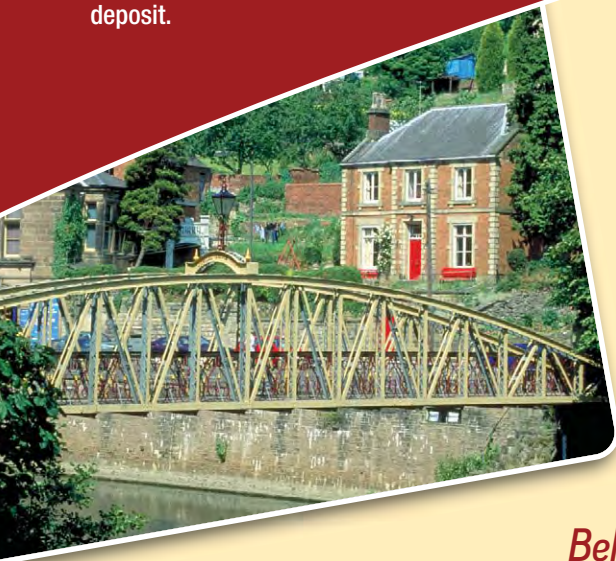
Many thanks for providing the coach for our trip to the President Hotel, Blackpool on Friday, 14th May. We would just like to say thank you to our driver, Kate, who was excellent. She was friendly and helpful to both the Day Care members and staff. She was very considerate to our Day care users and mainly because of her approach to everyone we will definitely be using your service again.

Many thanks again

Sharon Hughes

HOW TO BOOK A GROUP EXCURSION

- 1 Telephone our office and confirm your excursion requirements and our helpful staff can advise of additional facilities we have from previous experience. (Book meals with restaurants directly)
- 2 We will take your details and details of members of your group and send you a Confirmation Booking.
- 3 After receiving your Confirmation Booking please send us a deposit of £100 per coach.
- 4 We will send you a receipt for your deposit.
- 5 15 days before your departure date, we will need the final balance of your excursion payment.
- 6 When we have received your final excursion payment, we will send you a final balance confirmation receipt.
- 7 Your group can enjoy the excursion and cherish the memories!



Belle Vue (Manchester) Ltd

The Travel Centre, Discovery Park, Crossley Road, Stockport SK4 5DZ

Customer Help Line

0800 028 4969

www.bellevue-mcr.com

Email: **sales@bellevue-mcr.com**